

- The unit will give an audible alarm consisting of 2 cycles of 3 loud beeps, then stop automatically.
- The red LED on the alarm will flash rapidly during the audible signal.

As with all electronic alarm products you should test your heat alarm every month, as well as any other interlinked alarms.

WARNING: The electronic test button provides a full test of the alarms functionality. DO NOT try to test the alarm with a naked flame, as this might present a fire hazard in itself.

MAINTENANCE

Vacuum every three months to help keep the unit working efficiently. Vacuum the exterior. Prevent vacuum from touching the unit.

WARNING: Never attempt to open or damage the battery.

TROUBLESHOOTING

If your heat alarm chirps intermittently:

- Check the location of your alarm.
- If the alarm chirps every 45 seconds and the yellow LED flashes at the same time, this indicates that the battery is low. Replace the unit within 30 days.
- HT-630 + Smart RF Module only: If the alarm chirps every 4 hours, another alarm in the network has a low battery and needs replacing.

If the yellow LED is flashing and the alarm is chirping:

- If the yellow LED flashes at a different time to the chirp, this means there's a fault with your alarm and it needs replacing.

If your heat alarm does not sound during testing:

- Push the centre test button firmly.
- If the unit has been silenced and is in low sensitivity mode, it may not sound. Wait 15 minutes.
- Make sure the alarm is securely located into the base plate.

If the alarm fails to operate correctly, the advice of the manufacturer should be sought by contacting Technical Support on:

0330 094 5830.

DISPOSAL



Waste electrical products should not be disposed of with your other household waste.

Your alarm does not contain any radioactive material. This means that the alarm is ideally suited for disposal within the waste electronic and electrical equipment (WEEE) recycling scheme. Please recycle where facilities exist. Check with your local authority, retailer or contact our technical support team for recycling/disposal advice as regional variations apply. Once the alarm is removed from the base plate the internal battery will be deactivated. The unit is now ready for disposal.

WARNING: Do not attempt to open.

WARNING: Do not burn or dispose of in fire

WARRANTY

FireAngel Safety Technology Limited warrants to the original purchaser that its enclosed heat alarm be free from defects in materials and workmanship under normal residential use and service for a period of 5 years from the date of purchase. Provided it is returned with postage prepaid and proof of purchase date, FireAngel Safety Technology Limited hereby warrants that during the 5 year period commencing from the date of purchase FireAngel Safety Technology Limited, at its discretion, agrees to replace the unit free of charge.

The warranty on any replacement HT-630 alarm, will last for the remainder of the period of the original warranty in respect of the alarm originally purchased – that is from the date of original purchase and not from the date of receipt of the replacement product. FireAngel Safety Technology Limited reserves the right to offer an alternative product similar to that being replaced if the original model is no longer available or in stock. This warranty applies to the original retail purchaser from the date of original retail purchase and is not transferable. Proof of purchase is required.

This warranty does not cover damage resulting from accident, misuse, disassembly, abuse or lack of reasonable care of the product, or applications not in accordance with the user manual. It does not cover events and conditions outside of FireAngel Safety Technology Limited's control, such as Acts of God (fire, severe weather etc.). It does not apply to retail stores, service centres or any distributors or agents. FireAngel Safety Technology Limited will not recognise any changes to this warranty by third parties.

FireAngel Safety Technology Limited shall not be liable for any incidental or consequential damages caused by the breach of any expressed or implied warranty. Except to the extent prohibited by applicable law, any

implied warranty of merchantability or fitness for a particular purpose is limited in duration for 5 years. This warranty does not affect your statutory rights. Except for death or personal injury, FireAngel Safety Technology Limited shall not be liable for any loss of use, damage, cost or expense relating to this product or for any indirect or consequential loss, damages or costs incurred by you or any other user of this product. Please see the back cover of this guide for contact details.

FireAngel Safety Technology Limited
Vanguard Centre, Coventry CV4 7EZ UK
www.fireangeltech.com

Technical Support Details:

UK Dial: 0330 094 5830

EIRE dial: 1-800 523171

Email: specification@fireangeltech.com

User Manual

FireAngel SPECIFICATION

10 Year Life Enhanced Heat Alarm

HT-630

THERMISTEK®

SMART RF READY

TEST YOUR ALARM MONTHLY

Please retain this user manual for future reference

CONTENTS

FEATURES	3	MAINTENANCE	5
WHERE TO LOCATE	3	TROUBLESHOOTING	5
INSTALLATION	4	DISPOSAL	5
ALARM TEST	4	WARRANTY	6

NOTE: This user guide is also available in large text and other formats. Please call **0330 094 5830** for further information.

IMPORTANT INFORMATION!

IMPORTANT: This user guide contains important information regarding the operation of your FireAngel heat alarm.

Ensure you read this user guide fully before installing and operating this alarm. If you are installing this heat alarm for use by others, you must leave this guide (or a copy of it) with the end user.

IF THERE IS ANY QUESTION AS TO THE CAUSE OF THE ALARM, ALWAYS ASSUME THAT THIS IS AN ACTUAL FIRE AND FOLLOW YOUR FIRE EMERGENCY PLANS.

To enable the unit to interlink with other alarms, this alarm can be fitted with a Smart RF Module which operates on FireAngel's Wi-Safe 2 networking protocol.

FEATURES

- Fixed point heat alarm, Class A1 with alarm point temperature 56°C - 64°C.
- Thermistor heat sensing element for accuracy, reliability and stability.
- Thermistek technology activates the alarm sooner if it predicts a significant rate of rise in temperature.
- 10 year, sealed for life battery.
- Operating red LED flashes once, approximately every 45 seconds.
- Fault indication - amber LED flashes to indicate a low battery condition or alarm fault. See Troubleshooting.
- Central Test/Silence (Mx) button. Tests circuitry, battery and sounder.
- Loud 85 decibel piezo sounder.
- Automatically resets when alarm condition has passed.
- Easy installation. Fixings supplied.
- Silencer. In the event of a known false alarm your alarm can be temporarily silenced by briefly pressing the central test button. Your alarm will automatically return to full sensitivity within 10 minutes.
- Including a Smart RF Module allows you to wirelessly interlink up to 50 heat alarms, smoke alarms and accessories. These may be either battery or mains powered.

WHERE TO LOCATE

For the best protection heat alarms should always be installed as part of a complete fire protection system that also includes smoke alarms. Heat alarms are best suited to areas where dust, fumes and moisture can cause nuisance alarms in smoke alarms, such as:

- Boiler rooms
- Kitchens
- Laundry rooms
- Loufts
- Garages

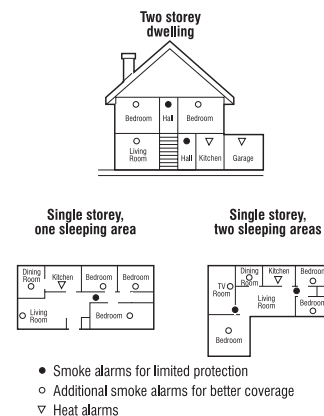
Heat alarms should not be installed in escape routes instead of smoke alarms. They should only be used in the above applications and where possible be interlinked to smoke alarms. (Smoke alarms should be installed in circulation areas forming part of the escape routes and in every room in the house.)

When heat alarms are installed in a room, they should be placed on the ceiling, ideally in the centre of the room. They should be at a distance no greater than 5.3m from the farthest wall, no greater than 5.3m from a door to any room in which a fire might start and no greater than 5.3m from the next heat alarm.

NOTE: HEAT ALARMS SHOULD NOT BE WALL MOUNTED.

Install sufficient alarms to compensate for closed doors and obstacles, which may interfere with the path of heat to an alarm

and may prevent occupants from hearing an alarm.



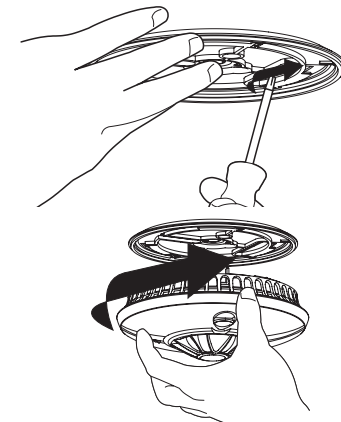
IMPORTANT: These heat alarms are intended primarily for use in single occupancy private dwellings. For use in other applications the manufacturers advice should be sought.

INSTALLATION

IMPORTANT: Please read 'WHERE TO LOCATE' before installing the alarm. Fit the base plate to the ceiling using the screws provided.

To fit the alarm to the base plate included in this pack, position the alarm on the plate, then turn clockwise until the alarm is locked into position. Make sure that the alarm is

twisted fully. The battery will now activate. The red LED on the front of the alarm should flash once, approximately every 45 seconds to show that it is active.



ALARM TEST

1. Briefly press the test button in the centre and release.

