

FireAngel[®]

#NetworkofSupport

Keeping safe from **carbon monoxide** at home



What is carbon monoxide?

You can't see it, taste or smell it – but carbon monoxide (often referred to as 'CO') is a toxic gas that can kill you quickly, with no warning.

CO is created when fossil fuels, such as natural gas and solid fuels like charcoal and wood, fail to combust fully because of a lack of oxygen.

This can happen when appliances such as boilers, cookers, heaters, gas fires and solid fuel burners are faulty, have been incorrectly fitted or not regularly serviced. It can also occur if flues, chimneys or vents are blocked or poorly maintained.

Sources of carbon monoxide:



Ovens



Escapes from adjoining properties



Open fires



Car exhausts



Broken flues



Blocked chimney



Boiler



BBQ's



Gas or paraffin heaters



CO! Recognise the warning signs

What to look out for:

- Yellow instead of blue flames coming from the gas appliance or flames that do not go all the way around the ring
- Black, sooty marks on the front covers of gas fires
- Sooty or yellow/brown stains on or around boilers, stoves or fires
- Pilot lights frequently blowing out
- Increased condensation on windows
- An unfamiliar or burning smell when gas or oil appliances are on

If you spot any of these signs in your home, we recommend calling a **Gas Safe registered engineer** to arrange a gas safety check as soon as possible.



Scan or [click here](#) if viewing online to view the Gas Safe Register

What are the symptoms of carbon monoxide poisoning?

Often called '**The Silent Killer**', carbon monoxide poisoning can happen in a matter of minutes or over an extended period of time depending on the levels of CO present. Exposure to CO can cause permanent neurological damage and other long-term health effects, and in extreme cases, can be fatal.

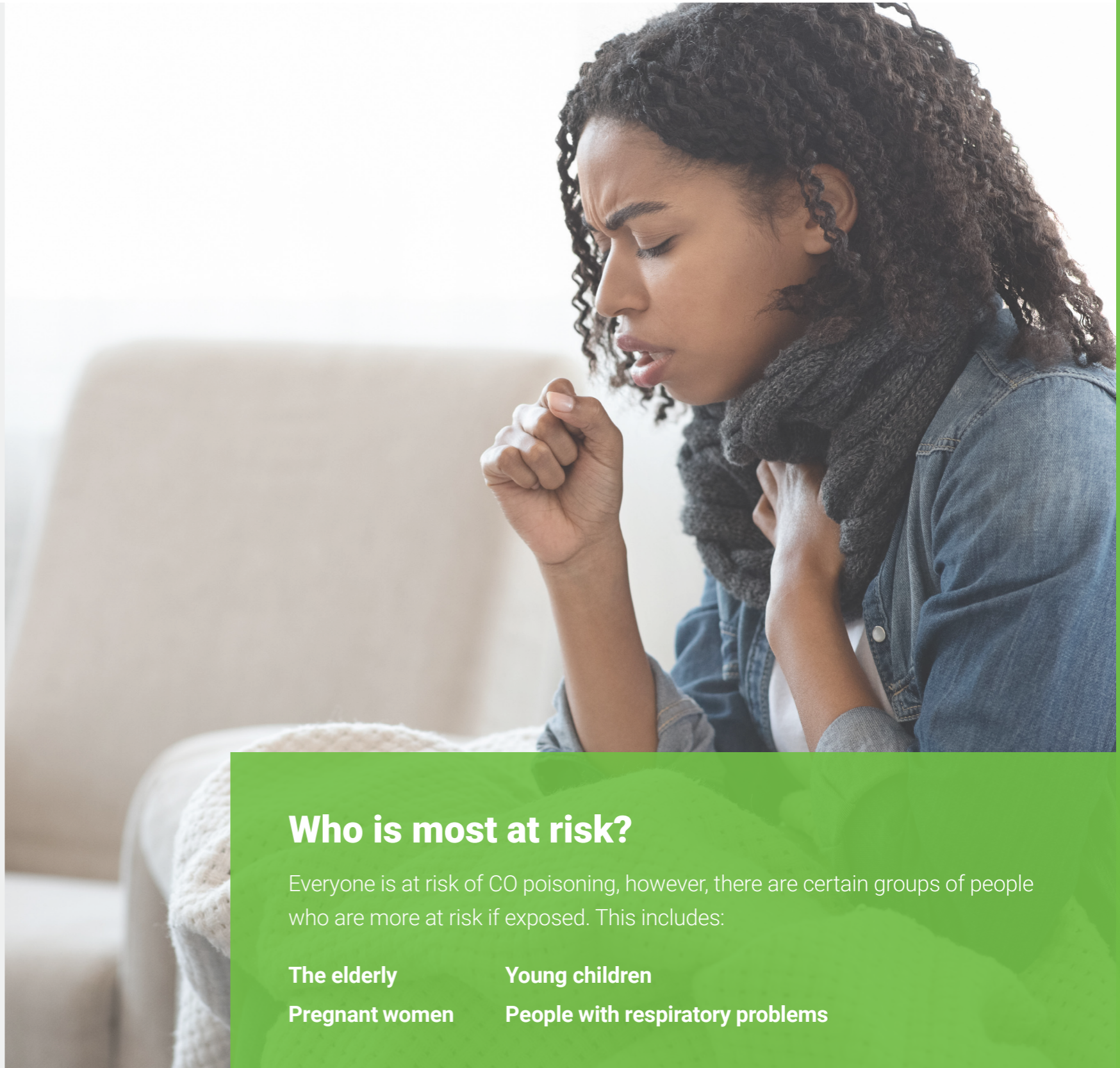
Understanding the symptoms of CO poisoning is vital, however, they can often be mistaken for the flu, Covid-19, food poisoning or a hangover.

If your symptoms feel worse when you are at home and disappear when you go outside, please turn off all appliances, go outside and **call the Gas Emergency Helpline on 0800 111 999**.

CO symptoms to look out for



Mild	Medium	Extreme
Slight headache	Severe headache	Unconsciousness
Nausea	Confusion	Convulsions
Vomiting	Drowsiness	Cardio respiratory failure
Fatigue	Fast heart rate	Death



Who is most at risk?

Everyone is at risk of CO poisoning, however, there are certain groups of people who are more at risk if exposed. This includes:

- The elderly
- Young children
- Pregnant women
- People with respiratory problems

HOW TO KEEP SAFE WITH A CO ALARM



FA3322

Digital Carbon Monoxide Alarm



Scan or **click**
to view more >



Keep safe from “The Silent Killer” with a CO alarm

The only way to detect carbon monoxide is with an audible CO alarm which measures levels of carbon monoxide and alerts you if it's too high.

Following a change in the law in England in October 2022, you should now have a CO alarm installed in your home if you have any fixed combustion appliances (excluding gas cookers).

CO alarms should be placed in any room that has a fuel burning appliance at head height, **1-3 metres away from a potential source**. If you do not have a CO alarm fitted, we recommend purchasing at least one as soon as possible.



What to look for when buying a CO alarm

Any CO alarms fitted in your home should be marked **EN50291** and have the **British Standards Kitemark** or another European approval organisation's mark on it.

With so many carbon monoxide alarms available from a variety of retailers our useful buying guide highlights what to look out for when choosing the right alarm for your family. For quick reference here's a handy list of features to consider:

- An audible alarm
- Battery powered alarms
- Alarms with digital display
- Alarms that offer wireless interlinking



Scan or **click here** if viewing online to find out more about your rights as a renter

Cost of living crisis

As the cost-of-living crisis continues, it may be tempting to look for alternative ways to heat or cook at home that can lead to a greater risk of carbon monoxide poisoning.

Therefore, we are urging everyone to follow the steps outlined in this booklet to avoid causing a CO leak and keep more people safe.

To arrange a check on your home appliances, find your local Gas Safe registered engineer by visiting www.gassaferegister.co.uk



Scan or **click here** if viewing online to view the Gas Safe Register

Access further support and advice on keeping safe at home

With millions of households now classed as fuel poor due to the sudden rise in cost of living and high energy bills, there is a widespread concern that the pressure to save money could see an increase in drastic and dangerous cooking and heating practices.

Home safety technology company, FireAngel, is helping to shine a light on the network of support available to those who are struggling behind closed doors. You'll find plenty of guidance, advice and resources on the FireAngel website.

ACTIVE CO ALARM

FA3820

Carbon Monoxide Alarm



Scan or **click**
to view more >



CO What to do if your CO alarm sounds

If dangerous levels of carbon monoxide are detected in your home, your CO alarm will sound.

Please open any doors or windows, turn off gas appliances and leave the property immediately. Call the Gas Emergency Number on **0800 111 999** and tell them what has happened.

If anyone is showing signs of poisoning or has collapsed, get them outside straight away, **call 999 and ask for an ambulance.**

If you suspect CO poisoning, always seek immediate medical advice. See your doctor or go to hospital – let them know that you suspect CO poisoning. They can do a blood or breath test to check.

Before you return to your home it is very important to call the 24-hour Gas Emergency Number on **0800 111 999** and tell them what has happened to receive safety advice (even if the suspected source of the CO is not a gas appliance).



1. Open doors & windows



2. Turn off appliances



3. Evacuate the property



4. Call the fuel supplier



5. Do not re-enter the property



6. Get medical advice

Do not re-enter your home until the source of the CO has been addressed or fixed by a qualified professional. You may need an engineer to inspect your appliances and flues to check that all is well.



If you believe there is a danger from gas in your home, contact the Gas Emergency Helpline on 0800 111 999.



Fire ◻ Carbon Monoxide ◻ Environmental

Keeping safe from **carbon monoxide** at home

If you are worried about the potential carbon monoxide risk in your home, we have plenty of guidance, advice and resources on our website.

Scan or **[click here](#)** if
viewing online to visit
the FireAngel website

